



# GPS Compass – GuideMate Application

## User's Manual



© Copyright 2008 Nolan Systems Ltd.

All rights reserved. Whilst every effort has been made to ensure that the information in this manual is accurate and complete, no liability will be accepted for any errors and/or omissions made. The manufacturer reserves the right to make changes and improvements to the specifications and features of the hardware and firmware of the products described in this document without prior notice. Reproduction, transfer, distribution or storage of part or all of the contents in this document in any form is prohibited without prior permission of the manufacturer. All trademarks acknowledged.

Thanks for choosing the Nolan GuideMate. If you have any questions or comments regarding the use of the GuideMate you can visit our web site ([www.nolan-sys.com](http://www.nolan-sys.com)) or contact our local Customer Service Department.

## **Warning**

Nolan makes no warranty as to the accuracy or completeness of the map data in this product. It is the user's responsibility to use this product prudently. This product is intended to be used only as a travel aid and must not be used for any purpose requiring precise measurement of direction, distance, location, or topography.

Nolan does not warrant that this product meets any regulations as an appropriate product for navigation or that it contains the latest hydrographic information

available. For your safety, users are advised to consult map provider to verify accuracy of data.

## Table of Content

<b>Warning</b> .....	<b>i</b>	<i>Write destinations to GuideMate</i> .....	8
<b>Introduction</b> .....	<b>1</b>	<i>Read POIs from GuideMate</i> .....	8
<i>Main features</i> .....	2	<i>Write POIs from GuideMate</i> .....	9
<b>Installing USB driver and GPS Compass Application</b>		<i>Read tracking logs from GuideMate</i> .....	9
.....	<b>2</b>	<b>Destination</b> .....	<b>10</b>
<i>To install GPS Compass Application</i> .....	2	<i>Add destination point on the Google Map</i> .....	10
<i>To remove GuideMate Application</i> .....	4	<i>Add new destination point</i> .....	10
<b>Connecting Your GPS Unit to a Computer</b> .....	<b>5</b>	<i>Modify selected destinations</i> .....	11
<b>Using GPS Compass Application</b> .....	<b>6</b>	<i>Delete selected destinations</i> .....	11
<b>Transferring Data</b> .....	<b>7</b>	<i>Edit destination category</i> .....	11
<i>Write LTE to GuideMate</i> .....	7	<i>Search the destinations in the list</i> .....	12
<i>Read destinations from GuideMate</i> .....	8	<i>Set destination reminder feature</i> .....	12
		<i>Import destinations from file</i> .....	12

<i>Export destinations to file</i> .....	13	<i>Configure GuideMate</i> .....	15
<b>POI</b> .....	<b>13</b>	<b>Troubleshooting</b> .....	<b>15</b>
<i>Import and export POI file</i> .....	13		
<i>Transfer POI to destination</i> .....	13		
<i>Delete the POI items</i> .....	13		
<i>Search the POIs in the list</i> .....	14		
<b>Tracking Log</b> .....	<b>14</b>		
<i>Import and export tracking log file</i> .....	14		
<b>Setting</b> .....	<b>14</b>		
<i>Switch between China map and Google map</i> .....	14		
<i>Use Google Map Search</i> .....	14		
<i>Set Default Map Center</i> .....	14		
<i>Configure GuideMate logger mode</i> .....	15		

## Introduction

Thank you for choosing GPS Compass

Application—the complete tool for managing your Nolan GPS unit. GPS Compass Application provides detailed geographic data that you can view on your computer or load on your GPS unit. This manual has been provided to get you started.

We use Google map data sources, which we identify as required in product literature and copyright messages displayed to the consumer. Virtually all data sources contain inaccurate or incomplete data to some degree. Nolan encourages customers to report any errors found

in our product by sending emails to our mailbox:

[info@nolan-sys.com](mailto:info@nolan-sys.com).

The NolaN GPS Compass Application is user friendly Windows based Google Map software cooperated with our GuideMate. It can read the destinations, POIs and tracking logs from GuideMate and show them on the Google map. Also you can use it to add, edit the destinations and POIs on the map and upload to the GuideMate. And you can also use it to configure logger mode and GuideMate settings.

## *Main features*

- Download destinations, POIs, tracking logs to GuideMate and show them on the Google Map
- Add destinations and POIs point on the Google Map and upload them to GuideMate
- Set GuideMate logger mode: by distance, by time and by speed
- Configure the unit directly
- Switch between China map and world map
- Edit destination name, destination information, destination category (totally 5 categories) in multi-language
- Write LTE (Long Turn Ephemeris) to GuideMate to

speed up fix time

## **Installing USB driver and GPS Compass Application**

Please download the USB driver and GPS Compass Application at the website:

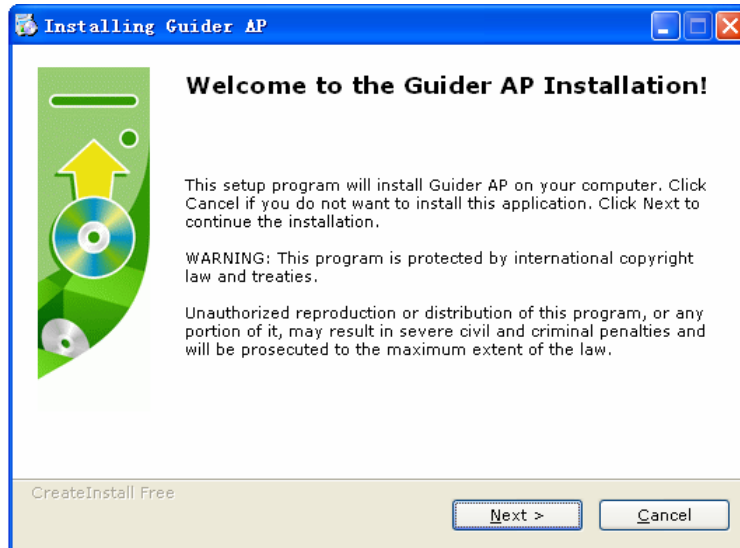
<http://www.nolan-sys.com/Support.html>

### *To install GPS Compass Application*

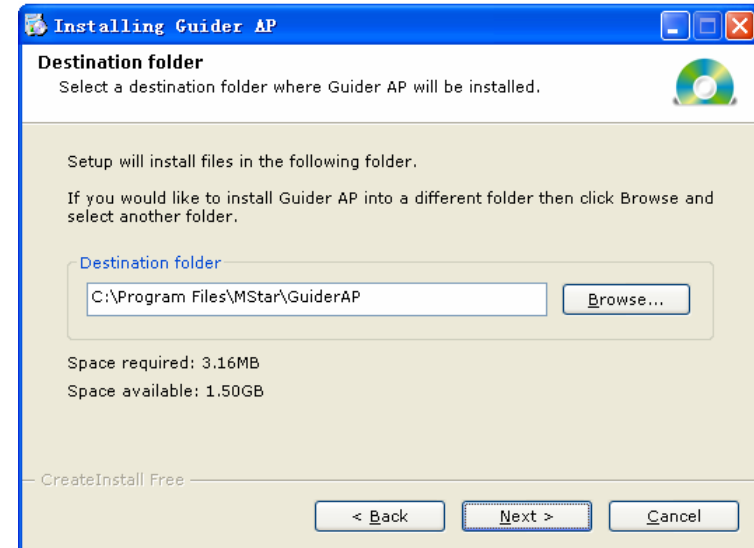
1. Double click the installation GPS Compass

Application .


## Installing USB driver and GPS Compass Application



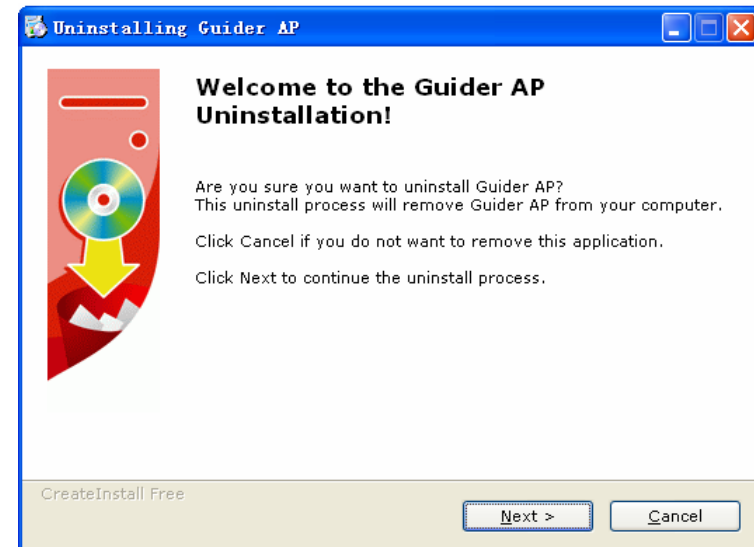
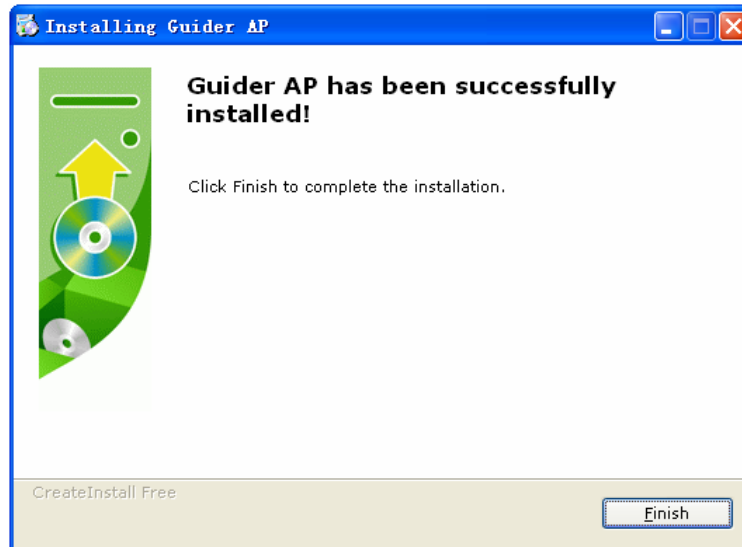
2. Click **Next**, select destination folder and click **Next** again.



3. When the application has been successfully installed,

click **Finish** and a compass icon  will appear in the program menu.

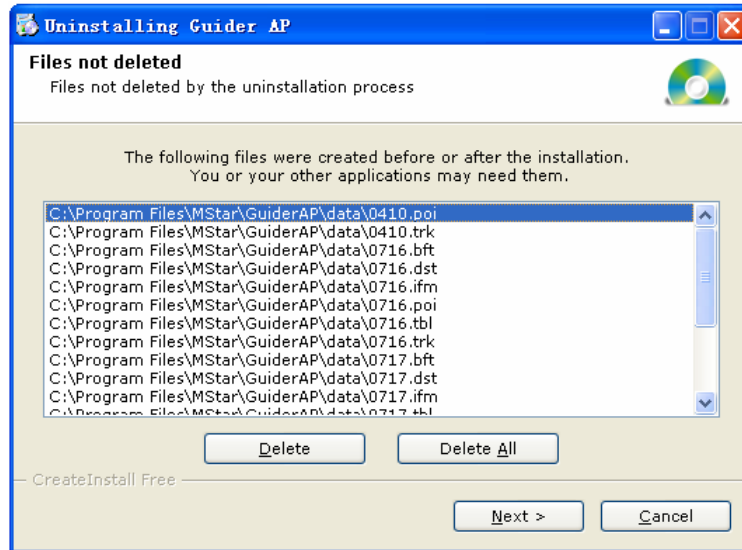




2. You can select to delete saved files or not.

### *To remove GuideMate Application*

1. Click the **Start** button. Then select **Programs > Guider AP > Uninstall.**



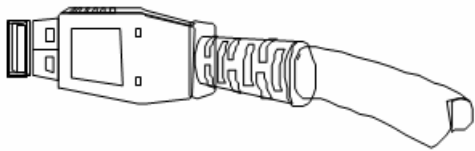
3. Uninstallation completed.

## Connecting Your GPS Unit to a Computer

Make sure you have installed USB driver and GPS

Compass Application before you connect your GPS unit to your computer.

1. If your GPS unit came with a USB data cable, connect your GPS to an available USB data port.



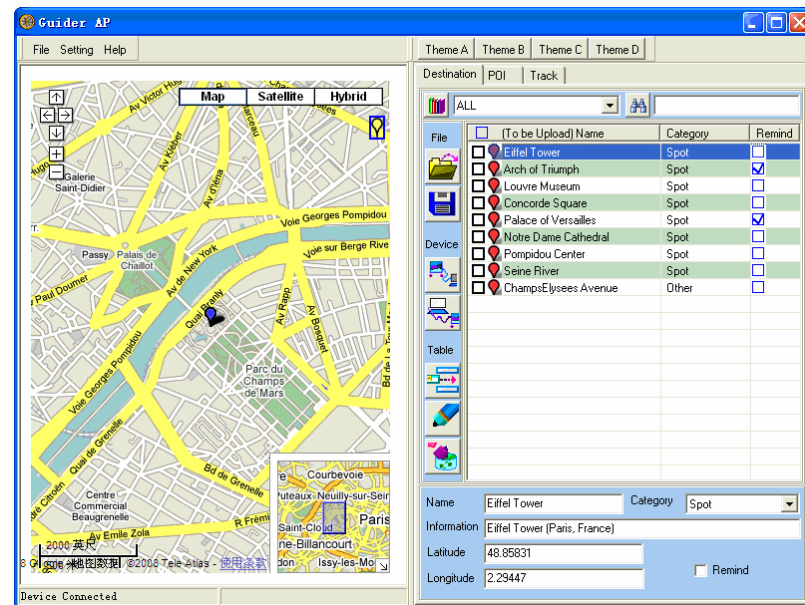
USB Data Port

2. Verify that your GPS unit is turned on and it don't enter the suspend mode.

## Using GPS Compass Application

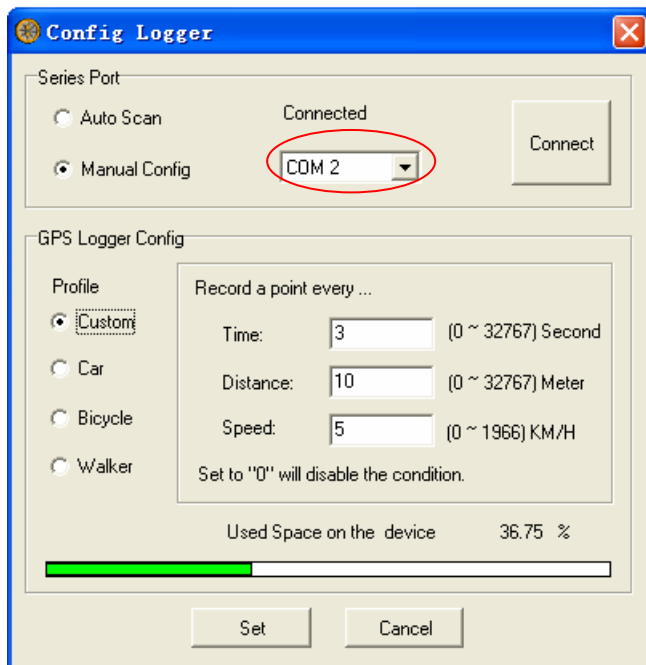
Please make sure the GuideMate power is turn on and connect to PC USB port, and your PC can connect to the internet.

1. After you start up the application, you'll see the Google map on the left view of the window and the application will connect your USB port automatically. If USB port is connected, the status bar will show **Device Connected**.



2. And you can click **Setting -> Logger** to configure

the serial port (USB to serial port). Check the **Auto Scan** or **Manual Config** and then click the button **Connect**. It is recommended to set to auto scan. When the serial port is connected, you'll see the word **Not Connected** change to **Connected**.



3. You can download all list (destination, POI, tracking log) from GuideMate by clicking the menu item **File > Download All List**. Also you can upload all list (destination, POI) to GuideMate by clicking the menu item **File > Upload All List**.


## Transferring Data

### *Write LTE to GuideMate*

If you check the menu item **File > Download LTE from Web**, the application will download LTE (Long Turn Ephemeris) when you start up the application each time. You can upload the LTE to GuideMate to speed


up fix time by click the menu item **File > Write LTE to Device**.

### ***Read destinations from GuideMate***

Click the tab **Destination** and click the button , the destinations will be read from the GuideMate and show in the list. When you click the destination in the list, you can see it as blue balloon icon appears on the Map, and its information will show below the list. You can save them as “xxx.dst” file.


### ***Write destinations to GuideMate***

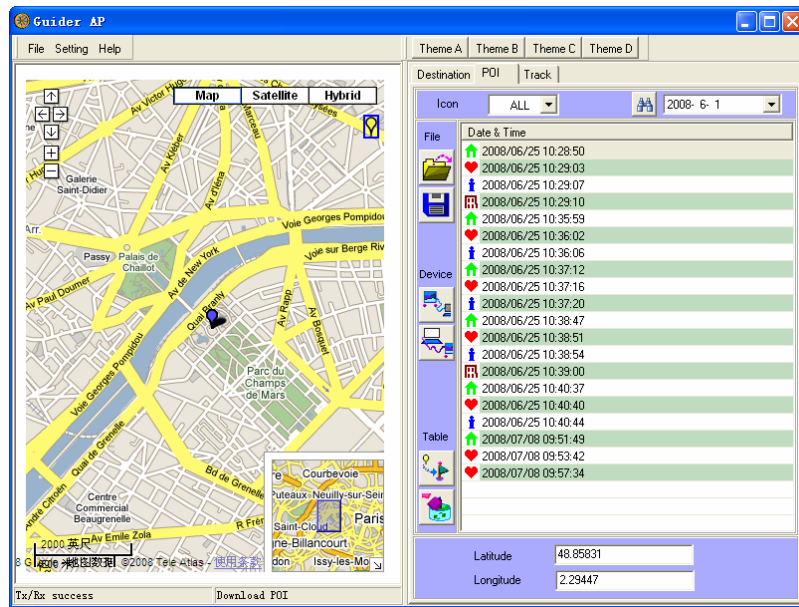
Click the tab **Destination** and check  in the first

column of destination list to select the destination you want to upload to GuideMate. You can check the **Name** header or right click the list item and pop up the menu, and click **Check Upload All** to select all the destinations. And click the button , the selected destinations will upload to GuideMate.

***NOTE:** The destinations in the GuideMate will be overwritten when writing destinations to GuideMate.*


### ***Read POIs from GuideMate***

Click the tab **POI** and click the button , the POIs will read from the GuideMate and are shown as 4 sorts of icons in the list. You can save them as “xxx.poi” file.




***NOTE:** The POIs in the GuideMate will be overwritten when writing POIs to GuideMate.*

### ***Read tracking logs from GuideMate***

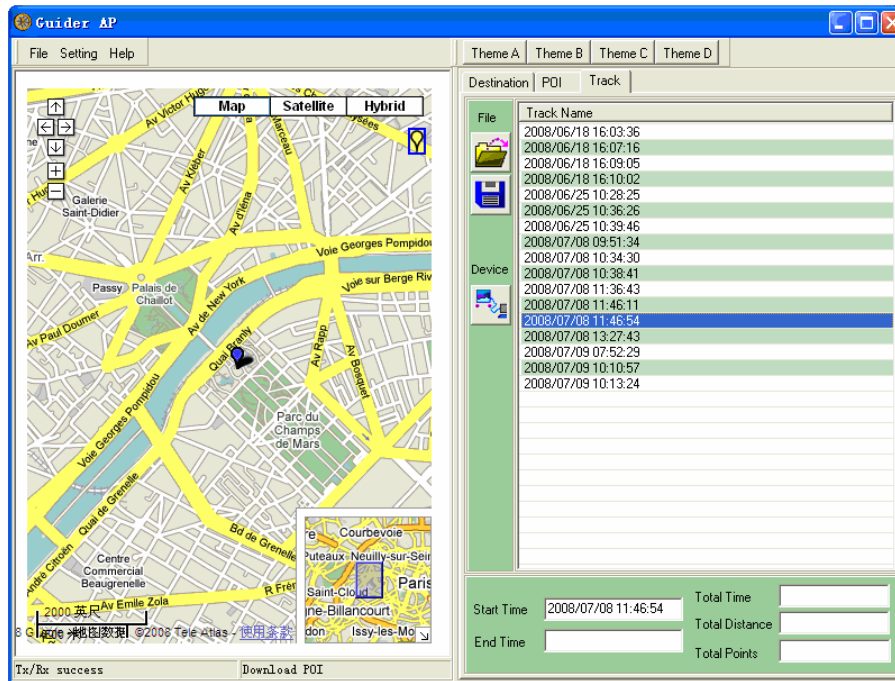
Click the tab **Track** and click the button , you'll see the tracking logs shows in the list. And when you click it, you'll see it shows on the map and its information below the list. You can save them as


“xxx.trk” file.



### ***Write POIs from GuideMate***

Click the tab **POI** and click the button  to upload all the POIs in the list to GuideMate. And you can see them in the category **POIs** of **Destination** page of GuideMate.

## Destination




corner of map,  will follow the cursor. You can mark selected POI (Point of Interest) by click the position on the map, the destination info section will display POI coordinates, and then enter its name and information and select its category and reminder feature (Please see the detail in **Set GuideMate reminder feature** section).

At last, click the button , the POI will be added above list in red, and when you click the POI in the list, the POI will show as a blue balloon icon  on the map and its information will also show info section.


## Destination

### *Add destination point on the Google Map*


Click the yellow balloon icon  on the top right

### *Add new destination point*

You can add a destination manually by entering the


destination info in the destination info and click the button , you'll see it is added into list in the selected category.

### *Modify selected destinations*


Click the destination you want to modify, modify its info in the destination section and click the button , you'll see the destination information updates with red mark.

### *Delete selected destinations*

You can select the destinations you want to delete by **Ctrl** and **Alt** Key, or drag the mouse over the selection,

and click the button . Also you can right click the list item and pop up the menu, and click **Delete** to selected destinations.


### *Edit destination category*

Click the button  in the tab **Destination**, a **Edit Category** dialog pops up. You can edit the category, and click **OK**. You can see the **Category** changes.







## *Search the destinations in the list*



You can search the destinations by enter parts of characters of destination name in the search box and click the button .

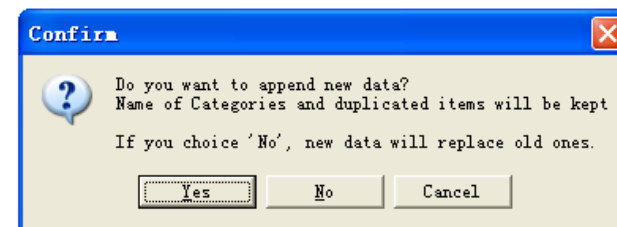
## *Set destination reminder feature*

The GuideMate provide reminder feature, each destination has the property **remind**, you can see  in the destination info section. If you check **remind** and click the button , you'll see  appears in the column **Remind**. If the destination marked  is uploaded to GuideMate, when you get near the destination with GuideMate, you'll see its


name appears with exclamation mark in the roam mode.

## *Import destinations from file*

Click the button , a **Open File** dialog pops up, you can select the destination file as “xxx.dst” file and open it. A **Confirm** dialog will pop up to ask you if replace old data. And the destinations will show in the list and mark as a red balloon icon  on the map.





### ***Export destinations to file***

Click the button , a **Save File** dialog pops up, you can save destination list as “xxx.dst” file.

## **POI**



### ***Import and export POI file***

Click the tab **POI** and click the button , a **Open File** dialog pops up, you can select the POI file as “xxx.poi” file and open it. And the selected POI will show in the list and mark as a blue balloon icon  on the map.


Click the button , a **Save File** dialog pops up, you

can save POI list as “xxx.poi” file.


### ***Transfer POI to destination***

Click the POI you want to edit in the list and click the button , you’ll see it jumps to tab **Destination**, and then you can enter POI name and information in the destination information section, and click the button  to add this POI to destination list.

### ***Delete the POI items***


Click the POI you want to delete in the list and click the button , the POI will be deleted.


## *Search the POIs in the list*

You can search the POIs by selecting the date in the search box and click the button .

## **Tracking Log**

### *Import and export tracking log file*

Click the tab **Track** and click the button , a **Open File** dialog pops up, you can select the tracking log file as “xxx.trk” file and open it. And the selected tracking log will show on the map.

Click the button , a **Save File** dialog pops up, you can save tracking log list as “xxx.trk” file.

## **Setting**

### *Switch between China map and Google map*

Check the menu item **Setting > Show Google Map**, you can see the world map. If you check the item **China Map**, you’ll see the China map.

### *Use Google Map Search*

Check the menu item **Setting > Use Google Map Search**, a map with search enter box will show.

### *Set Default Map Center*

If you want to see current map view each time you start

up the application, you can click **Setting > Set Default Map Center**.

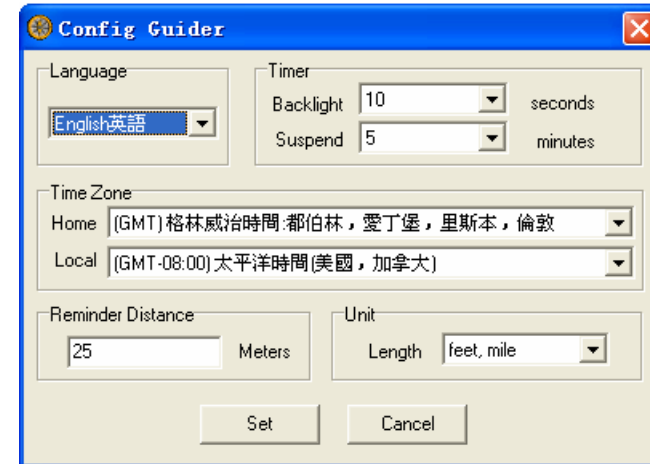
### *Configure GuideMate logger mode*

Check the menu item **Setting > Logger**, you can set logger profile of GuideMate: **Custom, Car, Bicycle**, and **Walk** and see the used memory space on the device.

### *Configure GuideMate*

Click **Setting > Guider**, it will pop up **Config Guider** dialog and show current GuideMate settings, you can select the options and click the button **Set** to configure

your GuideMate.



## Troubleshooting

**The application can not connect the GuideMate:**

1. Please make sure GuideMate turns on, and connect to PC USB port, and you have installed the USB driver. And enter the menu item **Setting > Logger** to

set serial port manually.

**The destination coordinates from GuideMate does not show the position accurately on the map:**

1. The position from GuideMate exits shift. And the map coordinates are not accurate. You can consult map provider.